



# PRESSCRETE ENGINEERING PTE LTD

31 Changi South Avenue 2, Singapore 486478 Tel. No. +65 6542 9315 Fax. +65 6545 7880  
www.presscrete.com.sg Email: general@presscrete.com.sg



## GROUND ENGINEERING DIVISION



**TriTech**

A subsidiary of Trittech Group Limited  
www.tritech.com.sg



# GROUND ENGINEERING

Our Ground Engineering Division provides the following services: Micropiles, Permanent & Removable Ground Anchors, Soil Nails, Guniting/Shotcrete, Jet Grouting, Pressure Grouting, Chemical Grouting, Slope Stabilization, Ground Improvement, Recharge Well & Relief Well.

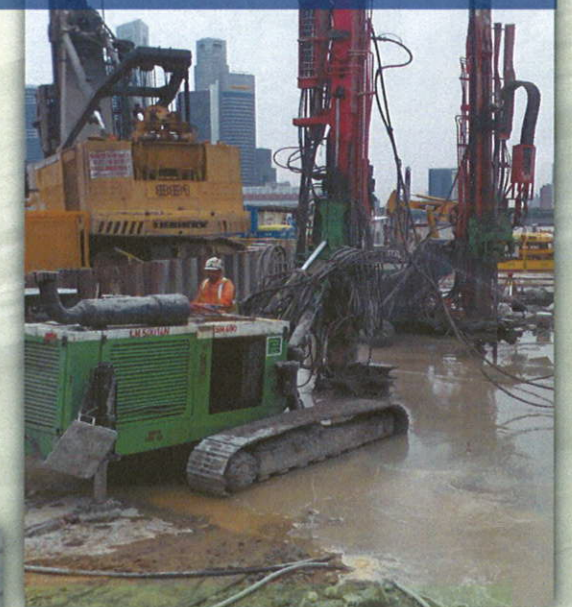
## PERMANENT & REMOVABLE GROUND ANCHORS



Our expertise includes installation of permanent and removable ground anchors



## JET GROUTING/ PRESSURE GROUTING/ CHEMICAL GROUTING



Our Ground Improvement Technology includes:

- Jet Grouting
- Pressure Grouting
- Chemical Grouting
- Recharge & Relief Well
- Slope Stabilization

## SOIL NAILS & GUNTING



**PRESSCRETE ENGINEERING PTE LTD**

31 Changi South Ave 2 Singapore 486478 Tel: +65 65429315 Fax: +65 65457880  
Website: [www.presscrete.com.sg](http://www.presscrete.com.sg) Email: [general@presscrete.com.sg](mailto:general@presscrete.com.sg)

## MICROPILES



Marine Micropile



Micropile Static Load Test

**Micropiles** are essentially small diameter foundation piles which are used in difficult ground and working conditions such as when there are space constraints. They are widely used in underpinning, which provides additional foundation support to structures; in upgrading and retrofitting; as well as in ground where there are boulders or rock. In addition, micropiles in rows can be used as retaining walls



Micropile Head

Marine Micropile

